

ELECTROFUSION FITTINGS



Geofittings registered brand is a system of electrofusion fittings, butt fittings and polyethylene adapters. These products are manufactured from the highest quality raw materials and materials and comply with applicable standards and legal regulations, which is confirmed by appropriate certificates and approvals.

Fittings meet the requirements and are certified EN 12201-3 and EN 1555-3.

The measurement of geometric features of fittings is performed in accordance with EN ISO 3126

INTERNAL PRESSURE RESISTANCE

	MOP	
	GAS	WATER
SDR 11	10 bar	16 bar
SDR 17	6 bar	10 bar



ELECTROFUSION COUPLER
From 20mm to 630mm



ELECTROFUSION END CAP
From 20mm to 315mm



ELECTROFUSION REDUCER
From 25/20mm to 225/160mm



ELECTROFUSION ELBOW 90°
From 25mm to 250mm



ELECTROFUSION ELBOW 45°
From 25mm to 250mm



ELECTROFUSION TEE
From 20/20mm to 250/250mm



SPIGOT FLANGE ADAPTOR
From 32mm to 315mm



SPIGOT TEE
From 90mm to 400mm



SPIGOT END CAP
From 63mm to 315mm



SPIGOT REDUCER
From 63/32mm to 315/280mm



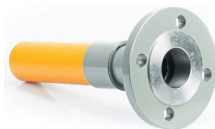
SPIGOT
From 63mm to 315mm



SPIGOT
From 63mm to 315mm



PE/STEEL TRANSITION GAS (FLANGE TYPE)
From 32/25mm to 315/300mm



PE/STEEL TRANSITION GAS (PIPE TYPE)
From 25/20mm to 315/300mm



PE/BRASS MALE THREADED TRANSITION FITTING
From 20mm to 125mm



PE/BRASS FEMALE THREADED TRANSITION FITTING
From 20mm to 75mm

Fittings are available in SDR 11 and SDR 17.

Electrofusion equipment, butt fusion equipment, tooling, available in Geofittings range of products.

